



INVITE BY VOICE LLC

16526 W 78th St. Suite# 353, Eden Prairie, MN 55346

Phone: 612-216-2016

www.invitebyvoice.com

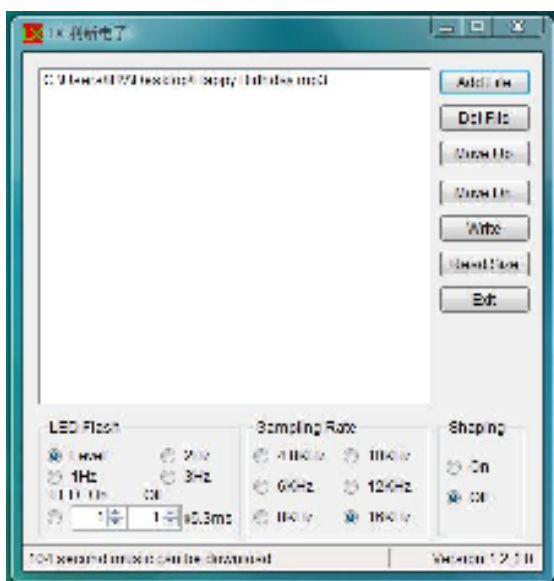
info@invitebyvoice.com

DISCLAIMER:

LX Sound Loader software is freely distributed "as is". Invite By Voice LLC cannot be held liable for data loss, damages, loss of profits or any other kind of loss because of using or misusing of LX Sound Loader software. Please use this software at your own risk.

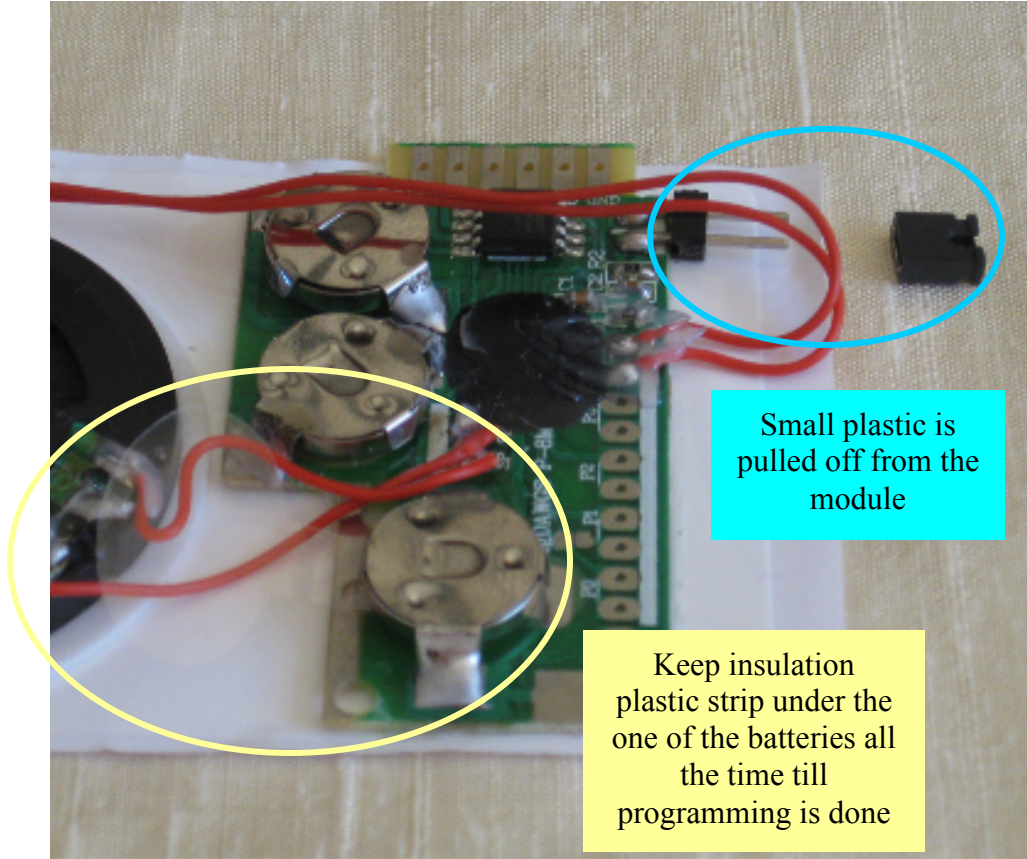
STEPS TO DOWNLOAD and INSTALL SOFTWARE

1. Download our free software, LXSoundLoader, at <http://www.invitebyvoice.com/LXSoundLoader/LXSoundLoader.zip>. (please note that currently software only works for PC, not for MAC. Also software will not work for 64-bit operating system, but for 32-bit operating system. You can check your operating system by going to Start>Control Panel>System and Maintenance>Welcome Center>Show More Details> Look System Type under System section)
2. After unzipping the LXSoundLoader.zip file, double click on "dotnetfx" file to install the software.
3. After installation is completed, double click on "LX_Sound_Loader" to launch the software. This will give you the interface below

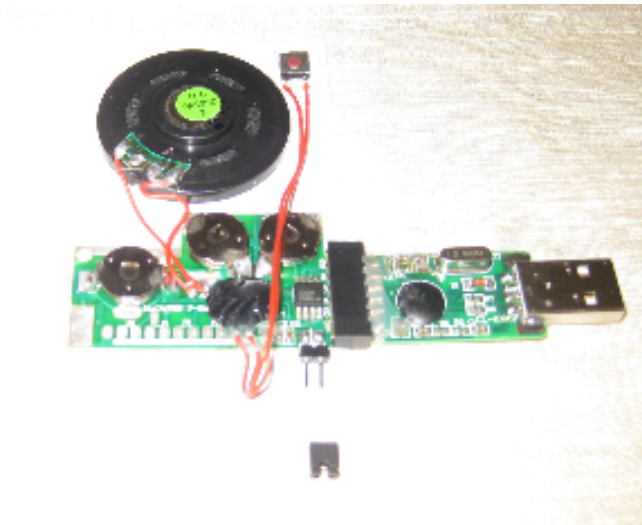


STEPS TO PROGRAM PUSH BUTTON SOUND MODULE (Very critical, Please follow the STEPS in the exact order)

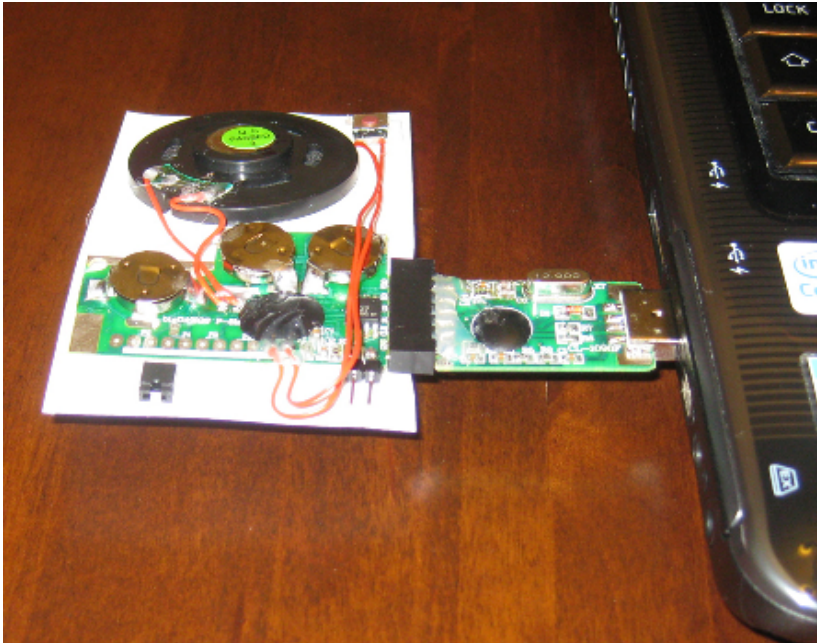
1. Pull off the small plastic part from module as shown in the picture below while keeping insulation plastic strip under the one of the batteries.



2. Plug USB direct sound module into programmer as shown in the picture below.



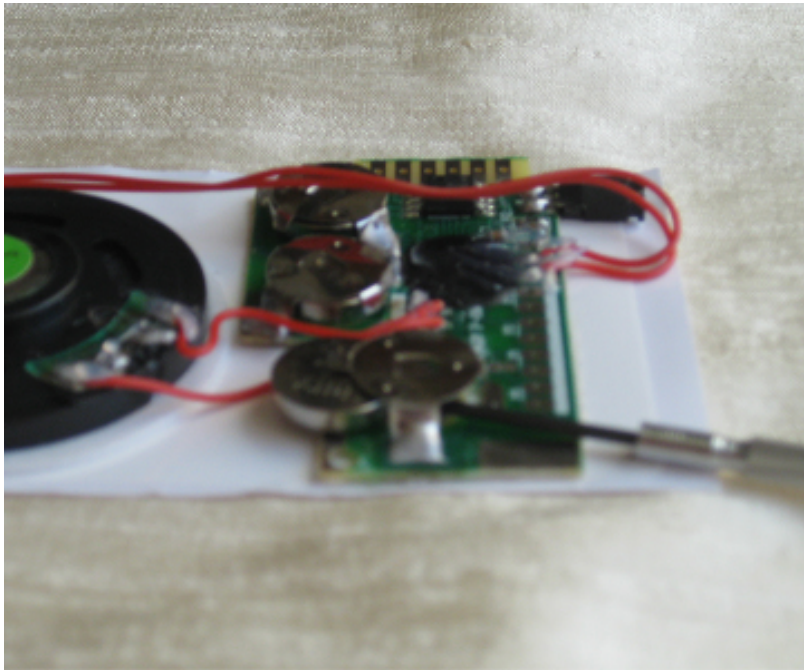
3. Plug all unit into your computer's USB port (see picture below)



4. In software panel, click “Add File” button to browse and select the music or voice file that you want to program into sound module. That will add the file into software's panel. Do not play with any other settings in the panel. **Set sampling rate to 16 kHz**. This will give you 104 seconds to program into module. If you want to record more duration than 104 seconds, you can set the sampling rate in the panel to lower values. The lower the sampling rate is, the higher duration time you will get. For most of the case even 8 kHz should give very good sound quality. If you set your sampling rate to 16 kHz, **PLEASE MAKE SURE THAT YOUR SOUND FILE IS NO LONGER THAN 104 SECONDS**. If your file longer than 104 seconds, program will give error. So, you need to adjust your original sound file to be less than 104 seconds. See our sources about editing sound or music files. As a next step click on the “Write” button on the panel.
5. It will take up to 15 seconds based on the size of your sound file for software to program your sound file into module. When it is done you will see “Write SPI Flash Success...” on the lower left corner of software panel.
6. Take all units out of computer's USB port.
7. Separate programmer from Sound module.
8. Place small plastic back on the module.
9. You can just move insulation plastic strip under one of the batteries. Push the play/stop button and module will start playing the programmed sound file.

10. IF you want to change your sound file or duration time, you can go through all these steps AS MANY TIME AS YOU WANT and module will play new configuration each time. BASICALLY, IT IS RE-PROGRAMMABLE.

11. VERY IMPORTANT: FOR PUSH BUTTON MODULE, YOU HAVE TO PLACE insulation plastic part UNDER THE BATTERY FOR RE-PROGRAMMING. IT IS VERY SIMPLE; JUST SLIDE THE BATTERY OUT (see picture below) WITH ONE SHARP OBJECT. PLACE THE INSULATION SHEET AND SLIDE THE BATTERY IN



CONGRATULATIONS!!! NOW YOUR MODULE IS READY TO USE...